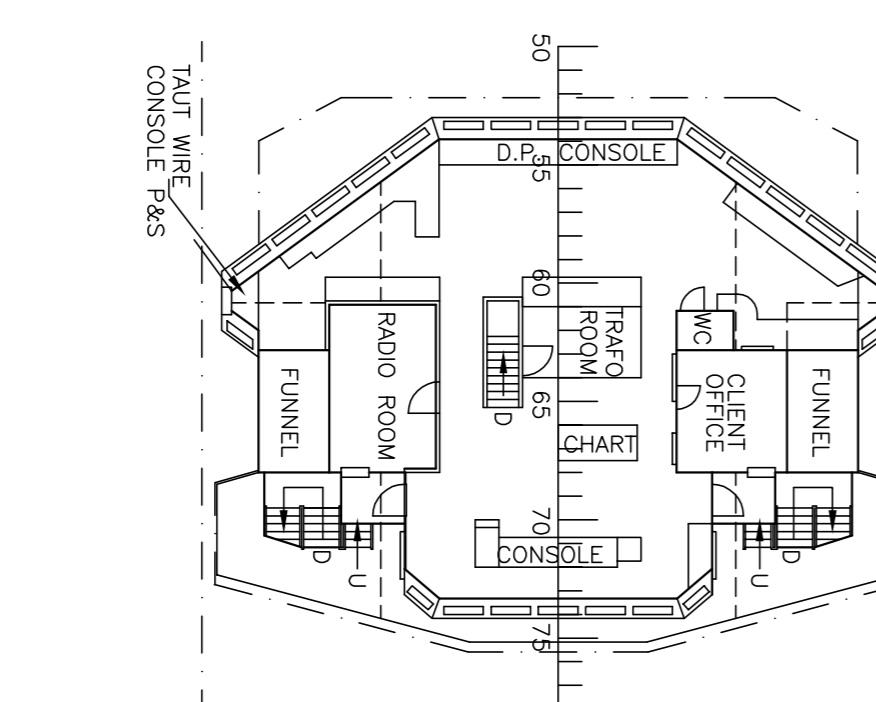
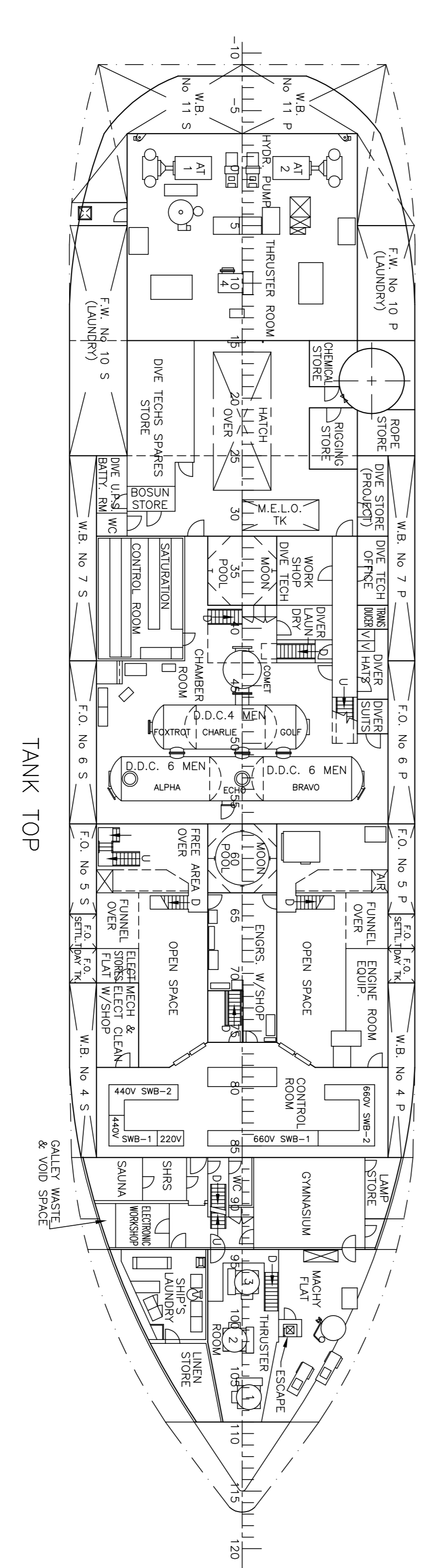
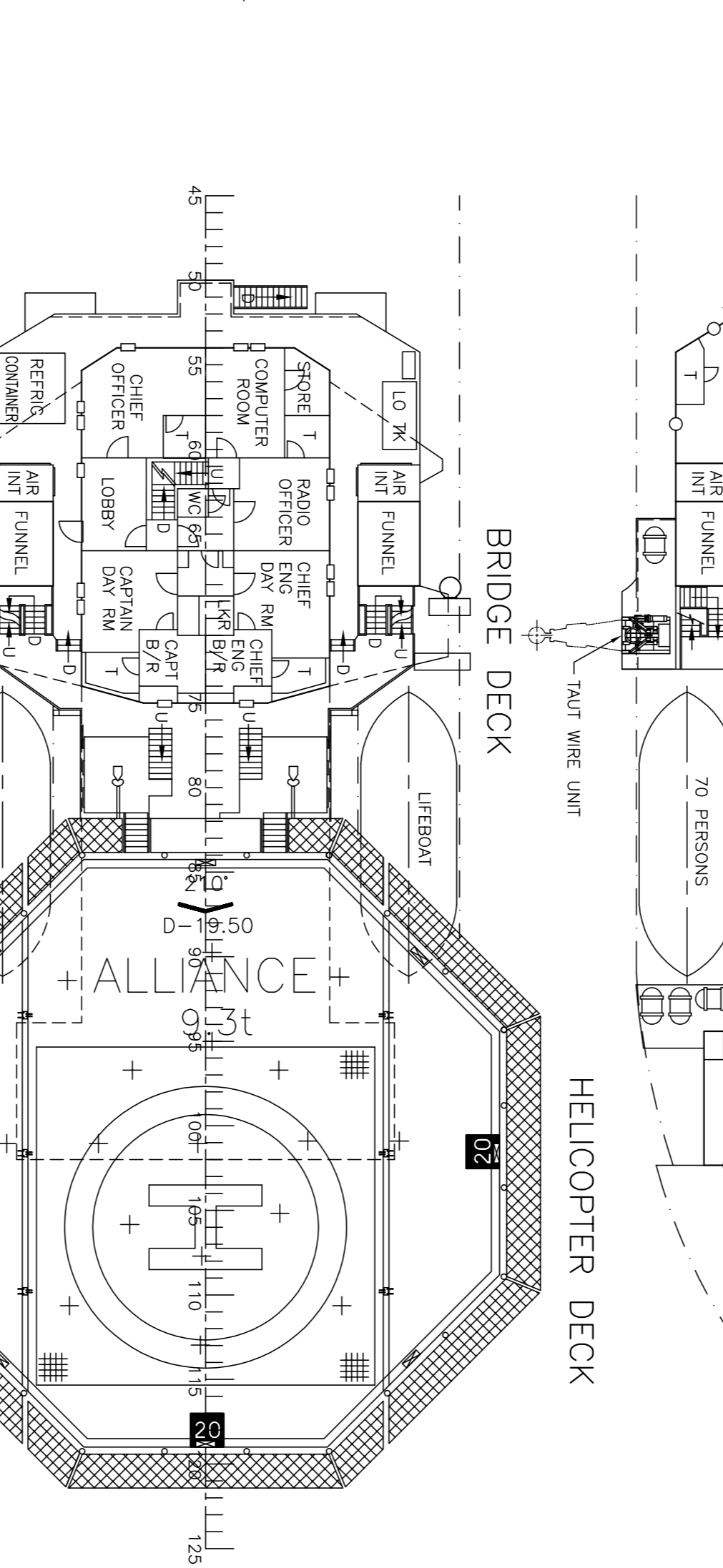
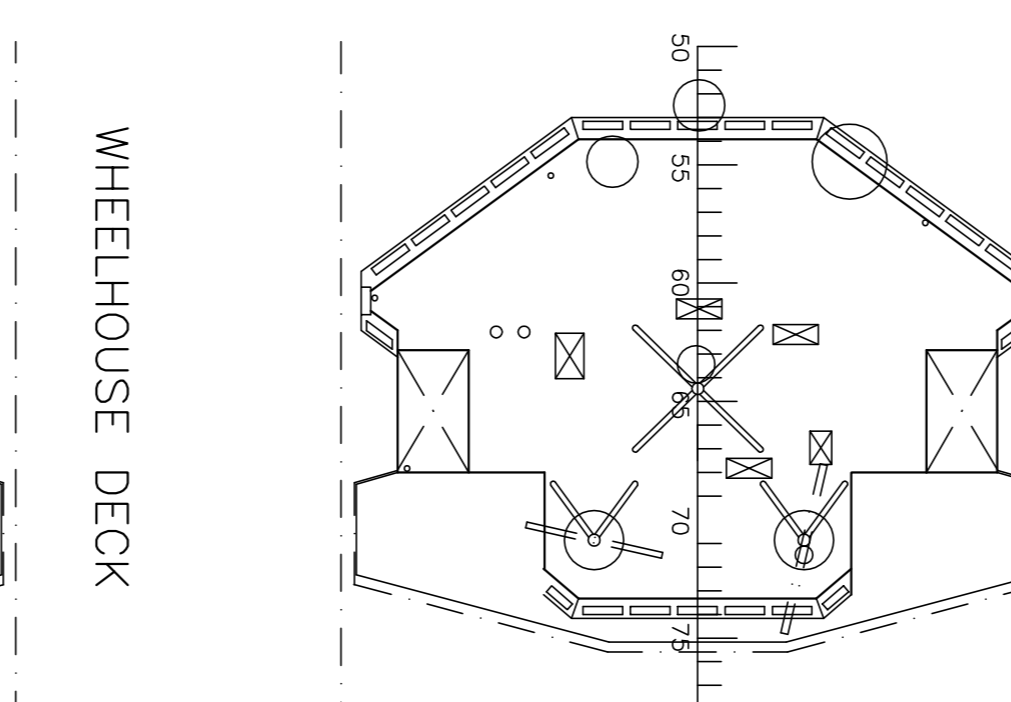
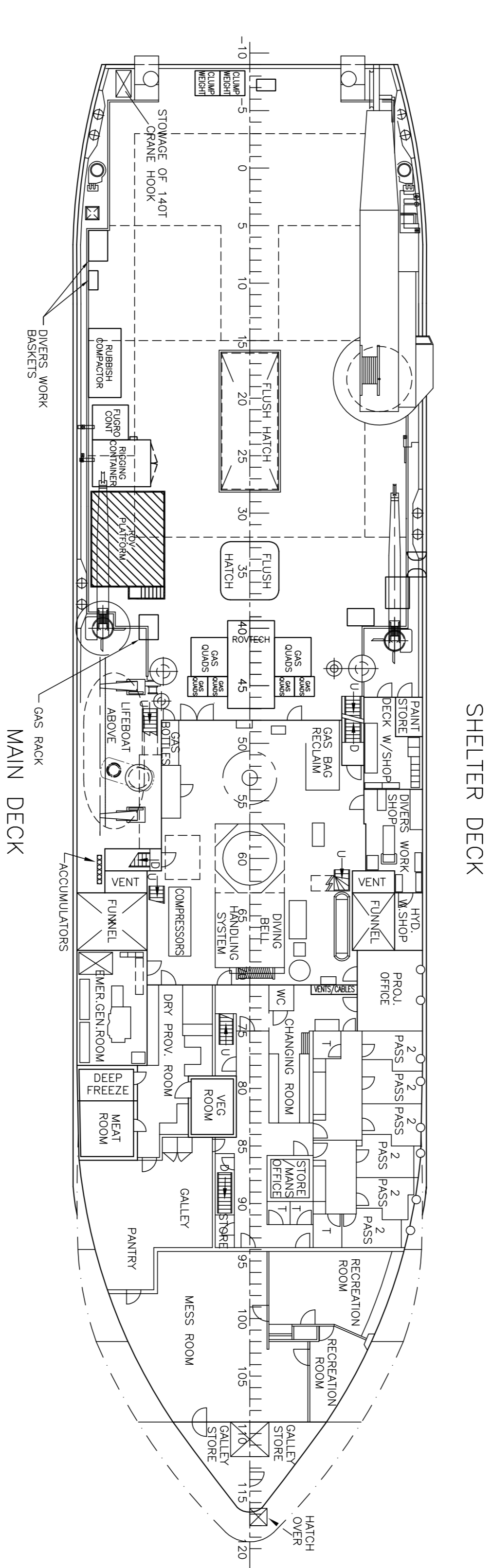
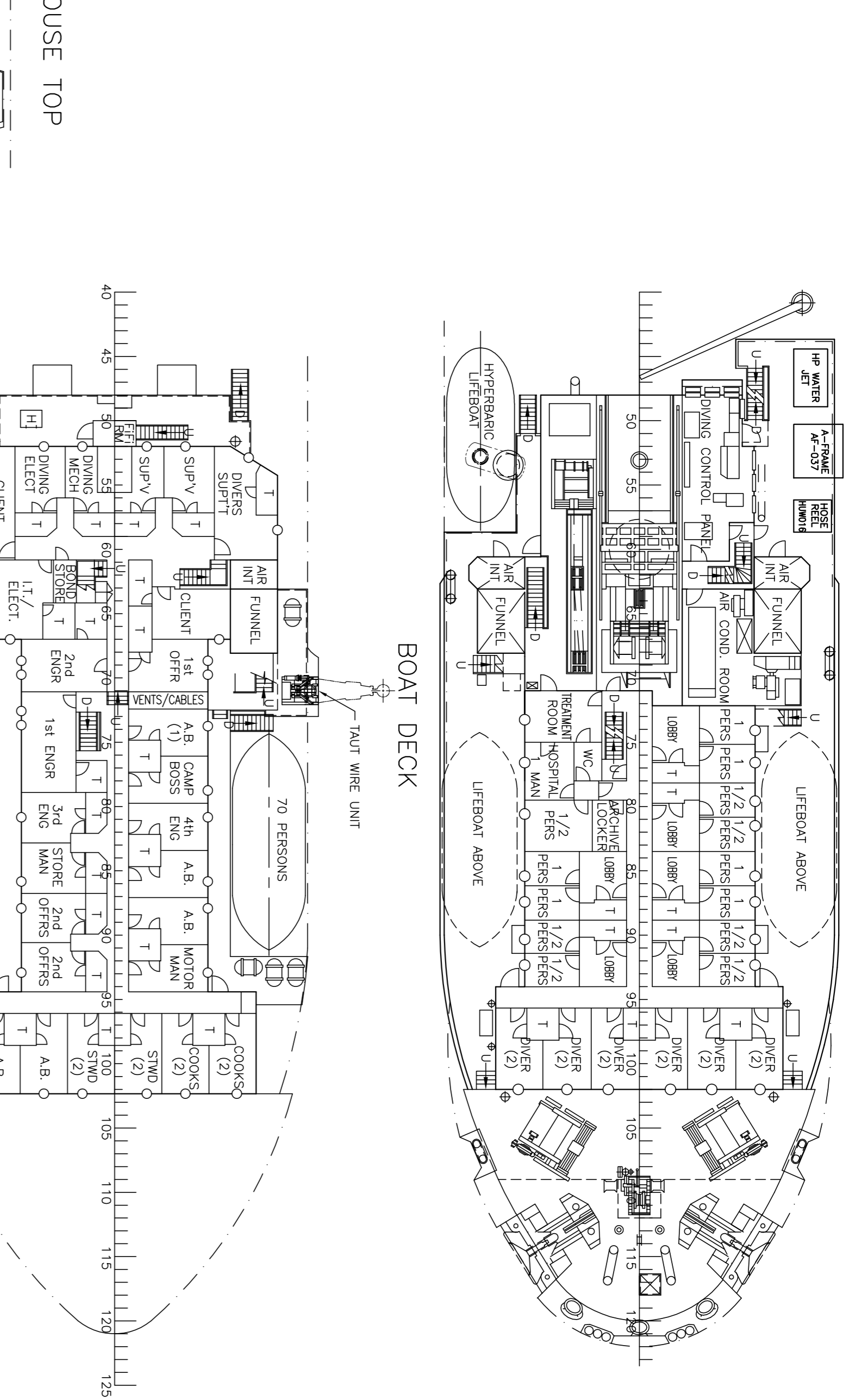
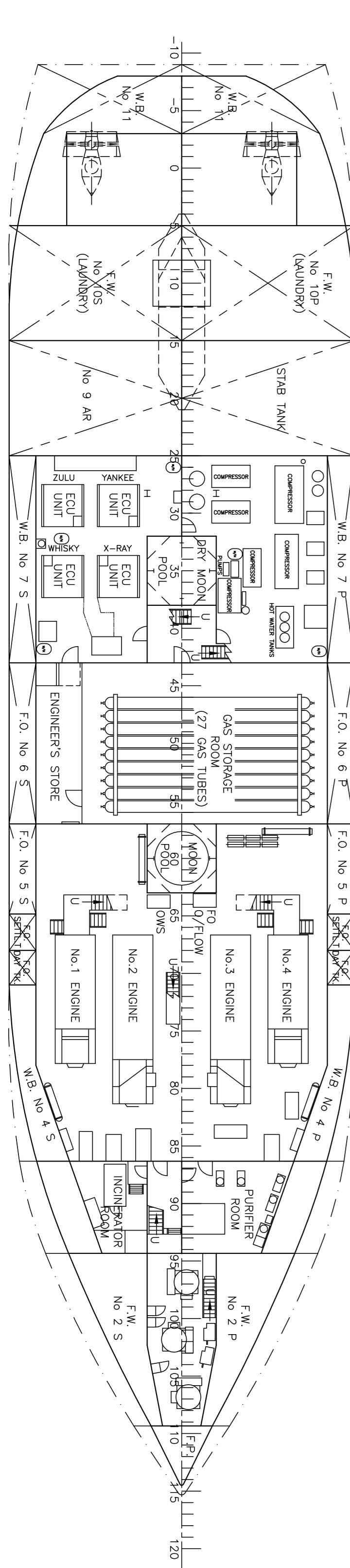


- WHEELHOUSE TOP
- NAV. BRIDGE DECK
- BRIDGE DECK
- BOAT DECK
- FORECASTLE DECK
- SHELTER DECK
- MAIN DECK



**REFERENCE DRAWINGS:**  
 WK-926.001-0001  
 ALLIANCE DECK ELEVATION  
 WK-926.001-0003  
 SHELTER DECK LAYOUT (AFT - FR.59)  
 WK-926.001-0044  
 CSO ALLIANCE SHELTER DECK STIFFENERS (AFT OF FR.51)

REV	DATE	REVISION	ORIG.	BY	D.O.	ENG.	APP.
11	9.11.10	GENERAL UPDATE	GP	BW	CD		
10	8.9.10	TAUT WIRE PLATFORMS ADDED	GP	BW	CD		
9	3.3.10	GENERAL UPDATE	BW	BW	CD		
8	6.7.09	AT M/C'S & M/W'S AND AIR DUCT RELOC. TAUT WIRE ADDED	PKJ	BW	CD		
7	14.8.08	SHEAVE REMOVED & STAIRS MOVED	SJM	WR	PM		
6	5.9.06	VESSEL COMMENT INCORPORATED	TMI	KB	BW	PM	



**D.S.V. ALLIANCE**  
**PRINCIPLE DIMENSIONS**

LENGTH OVERALL	78.300 m
LENGTH BETWEEN PERPENDICULARS	69.000 m
BREADTH MOULDED	18.000 m
DEPTH MOULDED	8.600 m
MAXIMUM DRAFT	5.550 m
DEADWEIGHT AT MAX. DRAFT	1.959 TONNES
GROSS REGISTER TONS (1969 CONV)	3.700 GRT
GROSS TONN. CERT. 1982	1.599 GRT
SPEED AT 4.5m DRAFT	12.000 KNOTS
TWO AZIMUTH-THRUSTERS : 2 x 1.840 KW	3.680 KW
FOUR SIDE THRUSTERS : 4 x 736 KW	2.944 KW

THIS DRAWING IS TECHNIP UK LIMITED PROPERTY AND WILL NOT BE DISCLOSED WITHOUT THEIR AUTHORISATION	
CLIENT:	IN-HOUSE
PROJECT:	ALLIANCE
TITLE:	GENERAL ARRANGEMENT
REFERENCE No.	DRAWING NUMBER
WK - 926.001 - 0010	REV.
	11

**TECHNIP UK LIMITED**