



Atlantic Marine
& Aviation

SeaVex MFE



SeaVex is based on a hybrid subsea excavation system which is extremely adaptable, compact and controllable.

Atlantic Marine fleet charter solutions & subsea rentals

-delivers engineering solutions for subsea cable installation, maintenance and repair. We work with clients across the offshore oil & gas, submarine telecoms and renewable power industries.

The equipment houses a large single cast impellor complete with direct drive and torque restrictor driven by a powerful compact hydraulic motor. Fitted with adjustable sized outlet nozzles at the base of the tool it allows enhanced kPa cutting of a comprehensive range of seabed materials.

Each system is fitted with either 2D or 3D sonar survey packages which are used to provide pre and post works surveys, and for live monitoring of the operation.



Atlantic Marine
& Aviation

Applications

- Pipeline & cable/umbilical trenching
- Harbour clearance
- Pipeline & cable/umbilical deburial for IRM
- Deburial of drill cutting
- Deburial of habitats / modules / UXO
- Spud can cleaning
- Freespan correction
- Salvage for recovery / access
- Sandwave clearance
- Sea bed leveling / preparation
- Rock dump dispersal



Specification

Footprint:

2.80m x 1.80m

Prop' Rotation:

270 rpm

Spread deck footprint:

10m x 10m

Maximum Torque:

6000 Nm

Self-Weight:

6t

Max Pressure:

325 bar

Nozzle:

Variable exit diameter

MaxFeed Flow Rate:

400ltr min

Standard working depths:

5m to 300m

Flow Rate:

4700ltr p/s

Additional working depth:

300m+

Up-thrust:

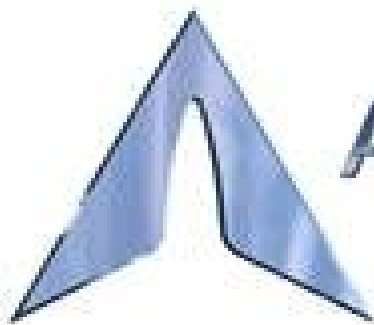
3.7t

Deployment:

Self Deployment, Vessel crane, A-Frame

Sonar:

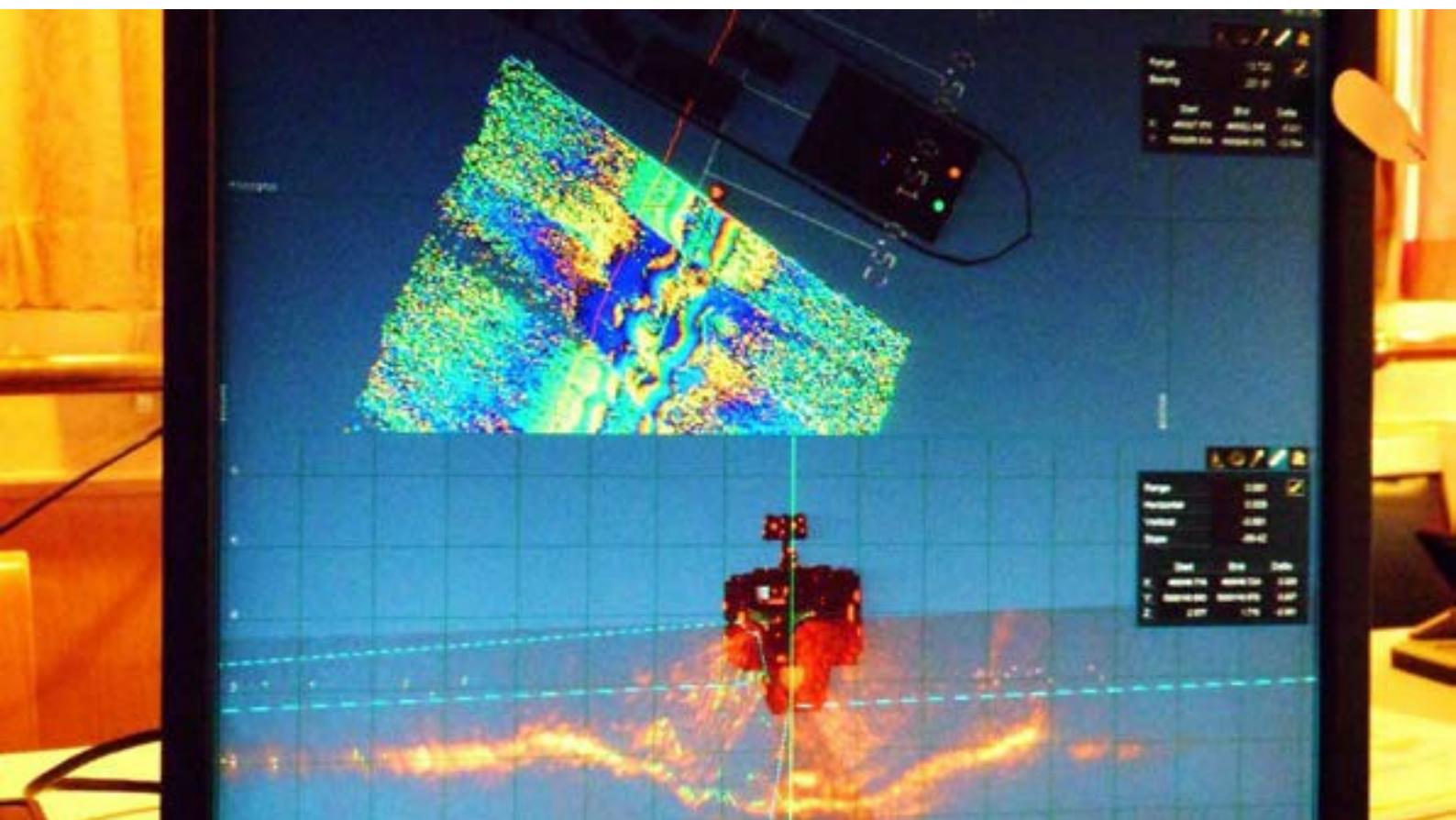
Project specific



Atlantic Marine
& Aviation

Project History

- Centrica / Lincs - Conducted Seabed kPa tests / 200kPa
- GeoMara /Moyle Interconnector cable - Contracted by GeoMara to debury various sections of subsea cable.
- DONG / Gunfleet Sands Contracted by DONG to post trench various cable ends.
- DONG / Walney Contracted by DONG to post trench 2.2km of cable .



Summary

SeaVex provides global seabed excavation solutions that is both cost effective and reliable, and which already compliments the wider range of services that Atlantic Marine offers. SeaVex subsea equipment meets a wide range of applications utilising the same unit, and with cost reduction to the client being a priority, the system is designed to be easily adapted on deck and operate from the Atlantic Marine vessels.

