



Atlantic Marine
& Aviation



ATLANTIC TONJER

OSV / DSV

FLOTTEL / DIVING / ROV / CONSTRUCTION

Model UT 705 1983 / OSV DP II

Flag/Classification:

TYPE: DP2 Offshore OSV / Accommodation

Port of Registry: Panama City

Classification RINA (Italy)

Unrestricted navigation

Additional Class notation AUT_UMS; DYNAPOS AM/AT R

Main particulars:

Vessel Built Apr. 1983 Norway

Vessel Converted 2000 by Ulstein Verft

LOA 80,77m

Breadth moulded 18,00m

Summer Draft 4,97m

Gross Tonnage 3349 t

Deadweight 2490 t

Bridge Equipment:

Auto Pilot Robertson AP-9 MK3

Radar 1 x Furuno FR 28v65S

Radar 1 x Furuno FR 2115X

1 x SIMRAD RGC-12

1 x SIMRAD GC 80

1 x ANSHUTZ Standard 20

Machinery:

Main Engines 2 x MAK 8M 453 3000 BHP each

Driving twin C.RP's

Rudders 2 x standard rudder type

Bow Thruster(s) 2 x Ulstein 150 TV 800 BHP each

Stern Thruster(s) 2 x Ulstein 150 TV 800 BHP each

Gearbox Frydenbo HS 30x2S

Propellers 2 x variable pitch 600 AGSC

Power: BHP 6000

M/E Output (K/W) 2 x 2237 kW (4474 kW)

Main Alternators 2 x 1140 kW + 2 x 254 kW

2 x 1400 kW (shaft gen's)

Emergency Generator 1 x 89kW

GPS Navigator GP-150

Bridge Nav Chart Telchart 2025 (C-map)

Bridge Echosounder Skipper GDS 101

FW Generators Reverse Osmosis Fresh Water generation

Helideck:

Super Puma 19.5m diameter

Cargo Deck 550m²

Deck Strength 5 t /m²

Cargo Capacity Summary:

Fuel Oil 900m³

Ballast Water 1815m³

Drill Water 1815m³

Slop 50m³

Maximum Speed 12 knots

Crossing/ Service speed 10 knots

Fuel consumption (subject to prevailing weather)

Full Speed abt 12 Tonnes / Day

Service Speed abt 10 Tonnes / Day

DP Mode abt 6.5 Tonnes / Day

In Port abt 2 Tonnes / Day

Loading Gear / Winches:

1 x Anchor windlass 2MB 12H

2 x Capstan CA3K

Cranes:

TTS Nordlift crane type GPCFO

SWL 50 t

Wire Type 54 mm

Extension fitted for top of turbine operations

Kongsberg SDP 21 DP class 2 - DP Reference systems:

3 x DGPS

1 x TautWire

1 x Kongsberg HIPAP 500

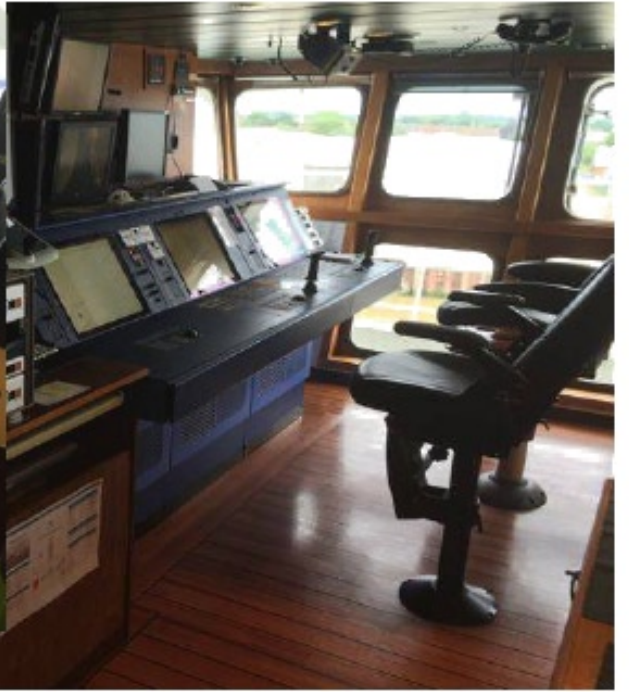
Accommodation:

Total berths 60 (100 berth option) (plus 1 hospital)

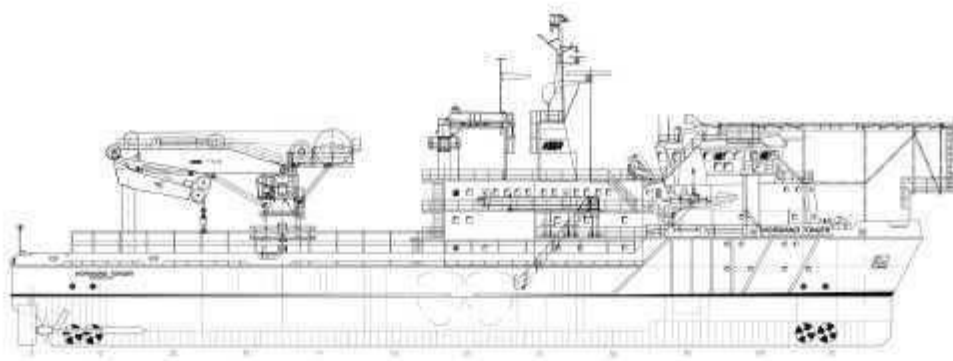
34 cabins for up to 60 charterers + 12 Cabins for 16-18 marine crew

Cinema / 2 lounges / client offices / conference room / sauna

DP2 Walk to work: yes / (option)







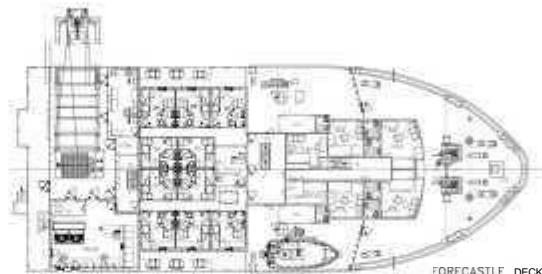
PROFILE VIEW



BRIDGE DECK



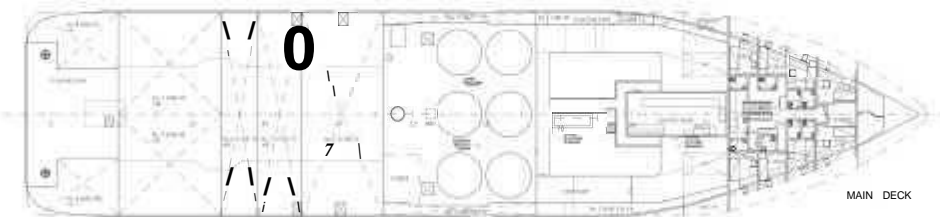
CAPTAINS DECK



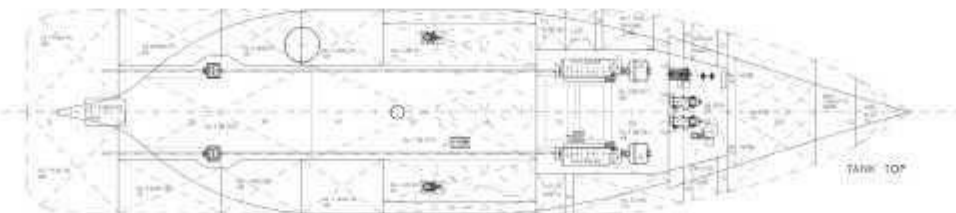
FORECASTLE DECK



SHELTER DECK



MAIN DECK



TANK TOP