



© paul hiatt
MarineTraffic.com

ATLANTIC EXPLORER

MULTI-PURPOSE SUPPORT VESSEL

UXO / BOULDER REMOVAL / SURVEY / RESEARCH / SALVAGE

Atlantic Marine & Aviation LLP
Maritime House, Basin Road North
Hove, East Sussex BN41 1WR, U.K.

www.atlantic-marine.co.uk

Telephone +44 1273 248800
sales@atlantic-marine.co.uk
VAT NO. 619 9645 91
IMO 1612391
Partnership No OC357983

ATLANTIC EXPLORER

VESSEL SPECIFICATIONS



The Atlantic Explorer is a specialist in Subsea Heavy-Duty ROV work. Equipped with a world class Remote Operated Grab Excavator (ROGE) ROV, the Atlantic Explorer is able to carry out a number of subsea tasks such as UXO clearance, Boulder Removal, Subsea Surveys and salvage operations.

MAIN FEATURES:

- ◇ ROGE ROV
- ◇ Moon Pool
- ◇ Dynamic Positioning System
- ◇ Survey Spread
- ◇ 28 Berths
- ◇ 3 Azimuth Thrusters

ATLANTIC EXPLORER—MULTI-PURPOSE SUPPORT VESSEL



ATLANTIC TONJER

VESSEL SPECIFICATIONS

VESSEL DETAILS:

IMO No	7924255
MMSI No	351407000
Call Sign	HO 4383
Flag	Panama
Classification	DRV Cargo
Year Built	1980
Last refit	2006

MAIN PARTICULARS

Length	70.575m
Beam	11.9m
Draught	5.22m
Gross Tonnage	1420
Net Tonnage	420
Operating range	5000miles
Service speed	12 knots
Fuel	204m3
Fuel consumption	4m3/day
Water	90m3
Endurance	25days
Cargo hold 1	300m3
Cargo hold 2	300m3
Moonpool	4.5m x 4m

ENGINES:

Main engine	3000hp
Main generator 1	200KVA
Main generator 2	200KVA
Harbour generator	110KVA
Emergency generator	150kW
Additional comments	3 phase 440v @ 60Hz
HPU Hydraulic	130kW
3 x Aquamaster thrusters	226kW
Tunnel thruster	410kW
Aux generator	200kW

CONTROL & NAVIGATION:

Main propulsion	Twin main engines to Single Screw
Thruster 1 (Bow)	250 Hp Aquamaster retractable 360 degree
Thruster 2 (Bow)	250 Hp Aquamaster retractable 360 degree
Thruster 3 (Mid)	250 Hp Aquamaster retractable 360 degree
Thruster 4 (stern)	Tunnel thrust
DP System	L3 Nautronix Dynamic Positioning model NMS 6000 Joystick / DP (0)
Radar	2 x Furuno x-band
DGPS	Trimble SPS
Echo Sounder	Furuno FE 700
Navtex	ICS Nav 5
Auto Pilot	Robertson AP 9 MK 3
Gyro Compass	Simrad GC 80
Electronic	Sodena
Chart	GECDIS

COMMUNICATIONS:

HF/MF Radio	Sailor CU5100
VHF Radio	Scandi VHF 3000 Sailor RT5022
Portable VHF Radios	1 x Simrad 2 x Entel

Internet

Satellite Com's	V-Sat, Mini-M VOIP phone system Wifi
-----------------	--

Other

EPIRB	McMurdo 406
GMDSS Compliance	Area 3
TV	2 x Sailor

ATLANTIC EXPLORER—MULTI-PURPOSE SUPPORT VESSEL



ATLANTIC TONJER

VESSEL SPECIFICATIONS

ACCOMODATION:

Total Berths	28
Total Cabins	26
Control Room	11.5m ²
Control Saloon	21.5m ²

SAFETY:

Rescue/MOB boat	5m rubber inflatable 15hp 6 persons
Life rafts	2 x 20 persons 2 x 8 persons 56 total
Survival suits	31
Life jackets	37
Hospital	8.5m ³

DECK MACHINERY:

Gantry SWL	20t
Gantry height	5m (8M extension opt')
Deck crane 1	10T @ 5M / 3t @ 16.5m
Deck crane 2	1.25t @ 6m
Deck crane 3	1.25t @ 6m
CCTV :	FWD deck control room

FUEL CONSUMPTIONS

Max Speed—12 Knots	5
Transit Speed—10 knots	4.5
DP1 Operations	3
Standby in port / anchor	1.2
m ³ per 24 hours	

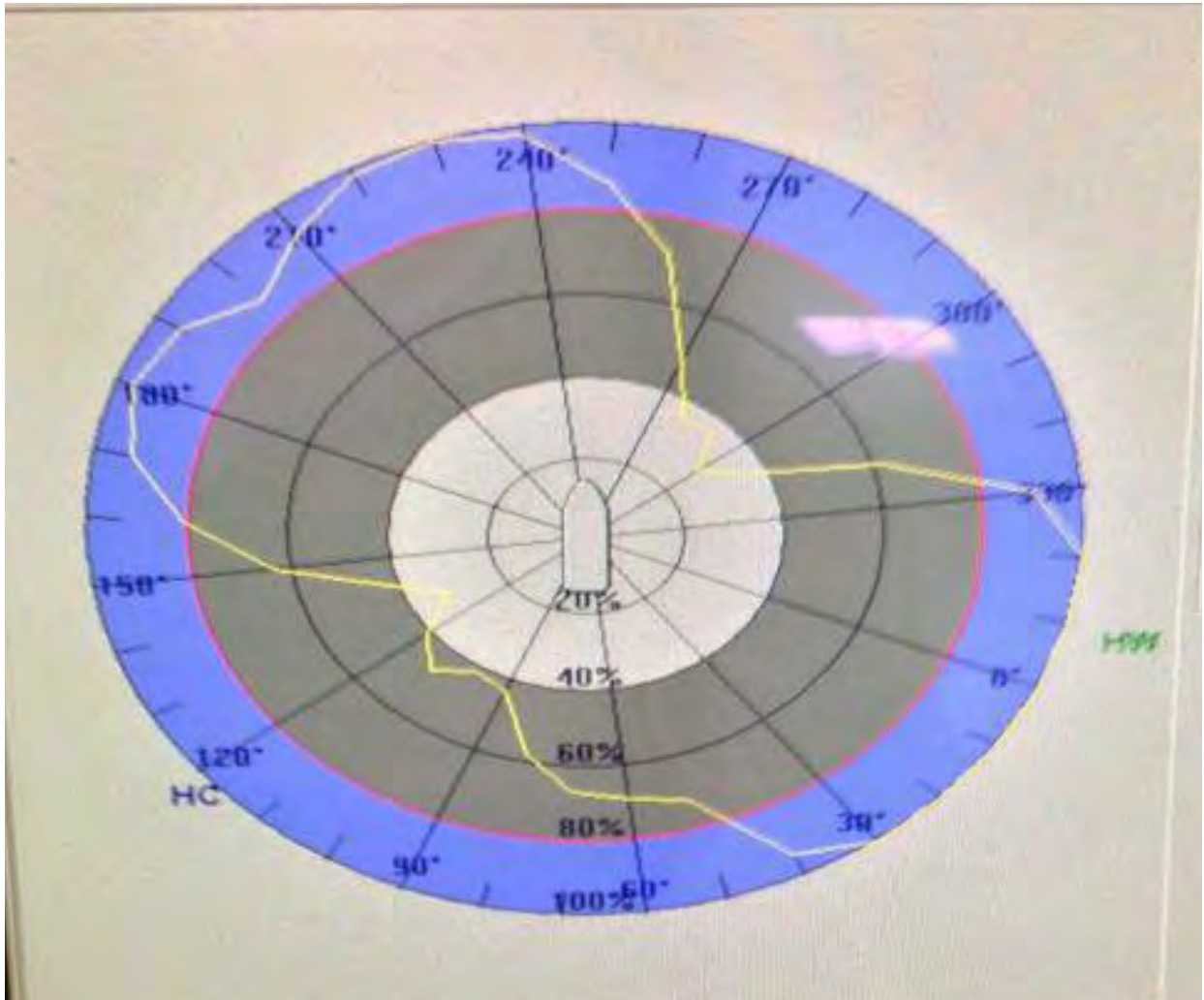


ATLANTIC EXPLORER—MULTI-PURPOSE SUPPORT VESSEL

ATLANTIC EXPLORER

VESSEL SPECIFICATIONS

DP CAPABILITY PLOT



ATLANTIC EXPLORER—MULTI-PURPOSE SUPPORT VESSEL

Atlantic Marine & Aviation LLP

www.atlantic-marine.co.uk

Telephone +44 1273 248800

sales@atlantic-marine.co.uk



ATLANTIC MARINE
OFF-SHORE & SUBSEA SERVICES

ATLANTIC EXPLORER

VESSEL SPECIFICATIONS



ROGE ROV

This unique deep water system has been purpose built to provide an efficient method for the deployment, operation and recovery of various subsea tools suitable for all ROV tasks as well as dredging, boulder removal, UXO identification and removals, debris removal, mattress lay or removal, and pre lay cable clearance.

A high speed winch holding 1400m of armoured umbilical provides the load bearing ROV with power, comms and lift. The load bearing ROV has multiple functions and is equipped with the latest in subsea navigation and survey equipment . There are a range of interchangeable tools for various applications. In addition to this there is survey equipment available for hire.

Please see attached ROGE ROV sheet for specific details of the spread.

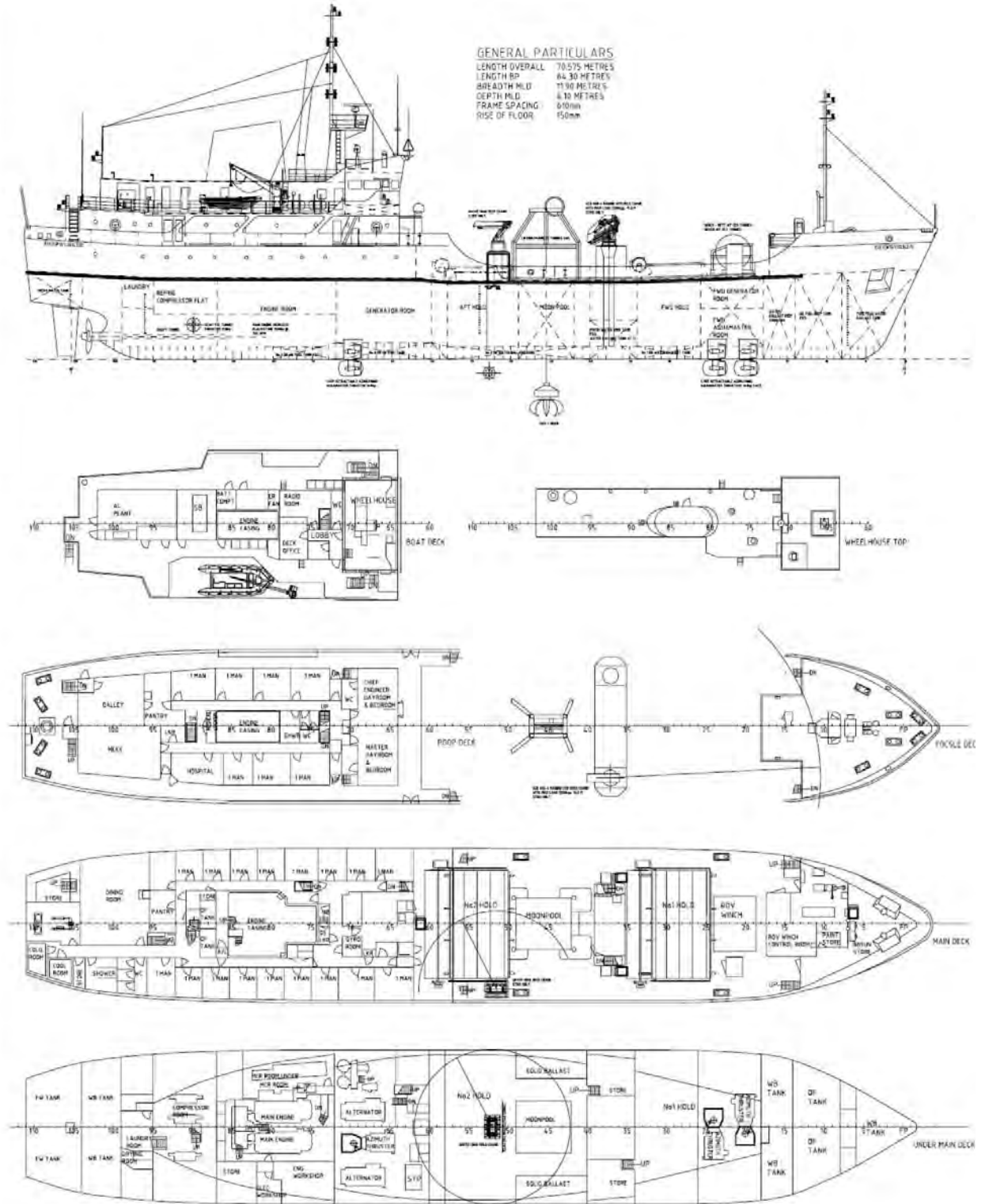
ATLANTIC EXPLORER—MULTI-PURPOSE SUPPORT VESSEL



ATLANTIC EXPLORER

VESSEL SPECIFICATIONS

GA PLAN



ATLANTIC EXPLORER—MULTI-PURPOSE SUPPORT VESSEL



ATLANTIC MARINE
OFFSHORE & SUBSEA SERVICES

ATLANTIC EXPLORER

VESSEL SPECIFICATIONS



ATLANTIC EXPLORER—MULTI-PURPOSE SUPPORT VESSEL

Atlantic Marine & Aviation LLP

www.atlantic-marine.co.uk

Telephone +44 1273 248800

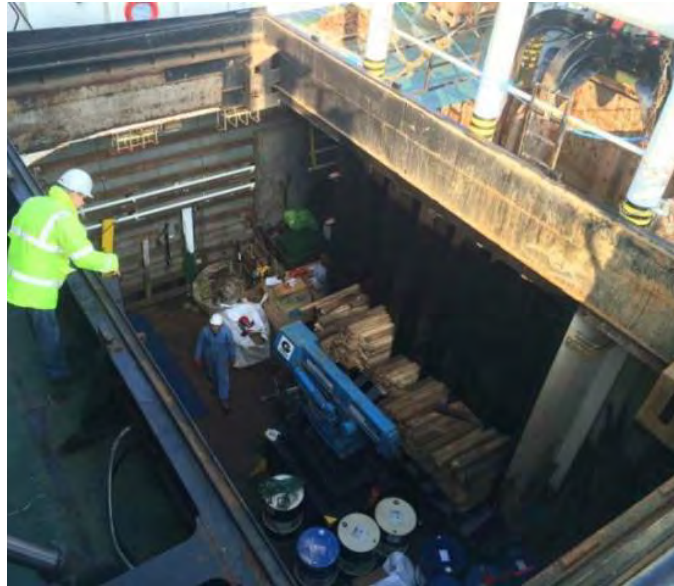
sales@atlantic-marine.co.uk



ATLANTIC MARINE
OFFSHORE & SUBSEA SERVICES

ATLANTIC EXPLORER

VESSEL SPECIFICATIONS



ATLANTIC EXPLORER—MULTI-PURPOSE SUPPORT VESSEL

Atlantic Marine & Aviation LLP

www.atlantic-marine.co.uk

Telephone +44 1273 248800

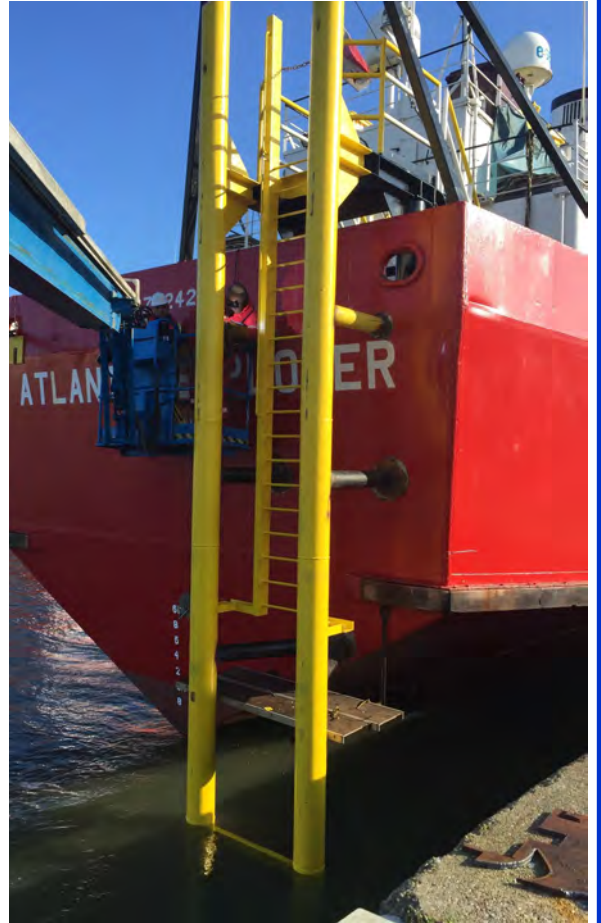
sales@atlantic-marine.co.uk



ATLANTIC MARINE
OFFSHORE & SUBSEA SERVICES

ATLANTIC EXPLORER

VESSEL SPECIFICATIONS



ATLANTIC EXPLORER—MULTI-PURPOSE SUPPORT VESSEL

Atlantic Marine & Aviation LLP

www.atlantic-marine.co.uk

Telephone +44 1273 248800

sales@atlantic-marine.co.uk